

One platform.
Multiple applications.
Total scalability.
Real competitive
advantage for your
terminal operations.



“You can’t improve what you don’t evaluate, and the operational data provided by IDEN TEC SOLUTIONS is key to our continuous performance improvement”

Oscar Pernía Fernandez,
Processes, Systems and Innovation
Team Leader, Total Terminal Interna-
tional Algeciras

THE TOTAL INTEGRATED SOLUTION FOR TERMINAL ASSET MANAGEMENT

Take real-time control of your containers, equipment and workforce with the Container Terminal Automation System (CTAS) from IDEN TEC SOLUTIONS

In the complex and dynamic world of marine and intermodal terminals, knowing exactly what’s happening on the ground in your facility is the key to safe, secure and productive operations.

Combining advanced software with multiple identification, locating and telemetric technologies, the CTAS application platform provides unparalleled visibility, monitoring and control of all your operational events – live and in real time.

As the industry’s leading integrated terminal asset management system, CTAS helps optimize operational performance with a powerful and proven suite of modular, scalable solutions for:

- Equipment, container and workforce management
- Fleet availability, scheduling and telemetrics
- Process automation

Both for existing and greenfield operations, CTAS offers a highly flexible and tailored approach to meet your unique and specific needs.



A NEW GENERATION OF INTEGRATED TERMINAL ASSET MANAGEMENT SYSTEMS: TOTAL VISIBILITY AND CONTROL AT YOUR FINGERTIPS

Designed to manage and control equipment, container and human assets in complex marine and intermodal terminal environments, the CTAS application platform represents the next generation in integrated terminal asset management systems.

A compelling need

Terminal operating systems plan and manage what should be happening in your facility—but they cannot always show what is actually going on moment-by-moment. CTAS bridges that gap.

Combining advanced visualization, mapping and reporting software with multiple identification, locating and telemetric technologies - including RFID, GPS, DGPS and wireless sensors - CTAS provides a complete range of real-time visibility, control and automation

solutions for the events, transactions and processes that drive your daily operations.

As your eyes and ears on the ground, CTAS captures hard data on what's really happening with the people, equipment and containers in your facility. The result is actionable information for better operational control and performance, improved safety and security, increased asset utilization - and a more robust bottom line.

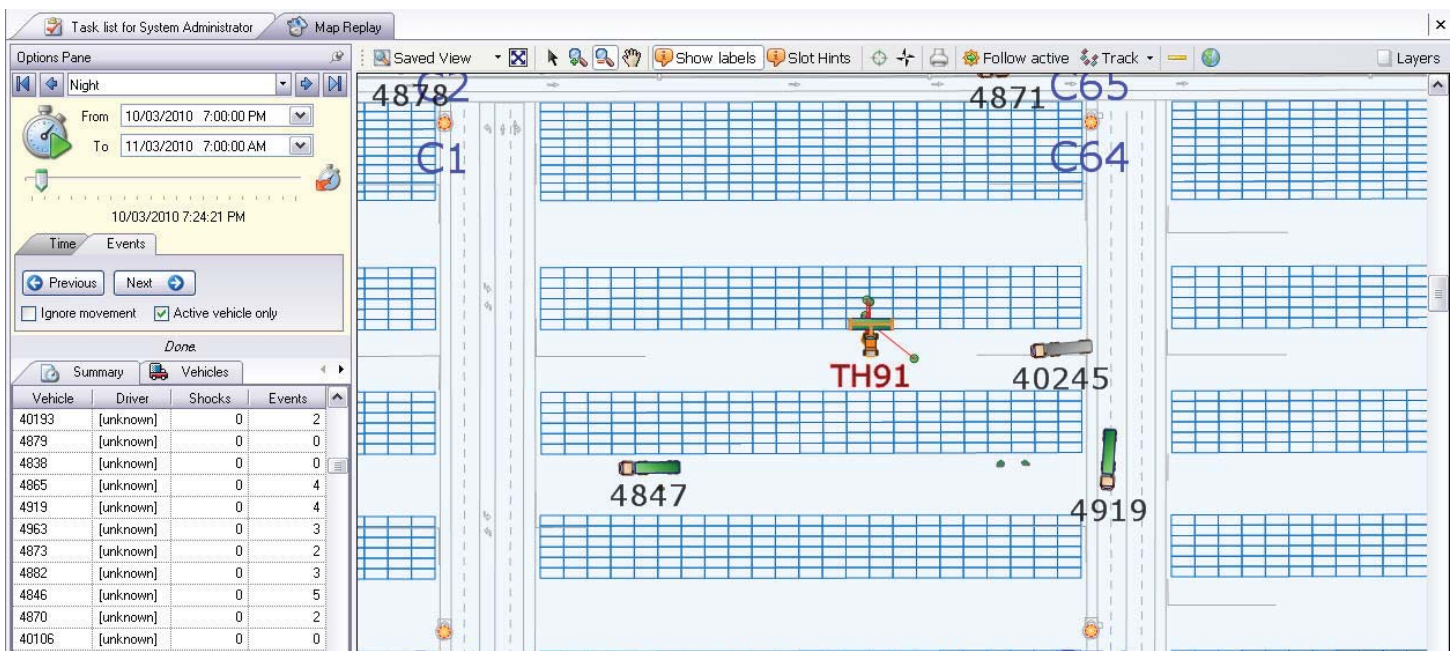
A flexible response

With open interfaces and easy integration to third party systems, CTAS can be deployed as a standalone solution, or in conjunction with TOS, other asset tracking hardware and automation technologies.

A tool for continuous performance analysis

Beyond the immediate benefits of enhanced daily control and visibility, CTAS provides a wealth of operational data for performance analysis. Our systems collect actual facts and figures on workforce and equipment productivity, utilization and other critical metrics for your business intelligence.

These vital statistics help measure your real performance today and support informed decision-making on future workforce management, equipment purchases and process improvements.



SCALABLE, MODULAR SOLUTIONS FOR COMPLETE OPERATIONAL CONTROL

Integrated yet highly flexible, CTAS real-time asset and process management solutions have been designed to meet our customers' unique and specific needs. Select and deploy the right mix of features for your current needs from our three core modules. Then scale up easily with additional systems and functionality as your operations grow and develop.

Equipment, container & workforce management

Enjoy increased equipment utilization, improved container inventory accuracy, enhanced driver security and better operator performance.

Features	Advantages	Benefits
Driver ID and access control	Prevent unauthorized use of handling equipment and personnel vehicles	Safer and more secure operations for your workforce and facility
Equipment tracking	Real-time visibility into mobile handling equipment and vehicle moves	Improved asset utilization for better equipment ROI and operational performance
Container position detection	Eliminate lost and misplaced boxes with 100% container-to-location verification	Automated inventory and transaction management for more reliable, efficient and productive yards
Vehicle and operator performance management	Capture and view real-time data on all equipment moves, lifts and drops	Accurate metrics to analyze performance trends and identify improvements

Fleet availability, scheduling & telematics

Maximise your equipment investment, improve asset utilization and ensure

Features	Advantages	Benefits
Shock sensing and damage control	Continuous monitoring and automated notifications for shocks and damage to container handling equipment	Early warning system to ensure equipment safety and protect your valuable investment
Fleet scheduling and availability	Track equipment status and share data between maintenance, operations and engineering	Coordinated fleet planning and management for better equipment life, safety and availability
Vehicle telematics	Real time capture of vehicle data: engine hours, fuel levels, tire pressure, load balance and more	Keep equipment running in optimal condition
Safety pre-check	Pre-operation safety check ensures equipment readiness	Ensures personnel safety

Process automation

Reduce container handling time, eliminate manual data entry, boost transaction accuracy and enhance operational safety with process automation solutions for yard crane, straddle carrier and wheeled facilities.

Features	Advantages	Benefits
Automated job stepping and job promotion	Automate container hand-offs between street trucks, ITVs, mobile handling equipment and STS/yard/rail cranes	Eliminate driver data entry/task confirmation and remove clerks from under cranes for improved transaction accuracy, safety and speed
Auto container hand-off	Identify and manage container-chests lifts and drops at yard, quay and rail.	Faster, more productive operations
Chassis PDS	Locate chassis and containers in wheeled yards	Eliminate lost and misplaced boxes and automate manual data entry for safer and more efficient wheeled operations
Truck grid management	Absolute position identification for street trucks in straddle carrier facilities	More effective control for straddle carrier operations



Virginia International
Terminals, Inc.

PORTS AMERICA

PNCT

HORIZON
LINES

lpc
Lyttelton
Port of
Christchurch

PATRICK

TERMAVI
TERMINALES MARITIMAS DE VIGO

Georgia Ports
Authority

APM TERMINALS

SIPG

موانئ دبي العالمية
DP WORLD

ABOUT IDENTEC SOLUTIONS

IDENTEC SOLUTIONS is the world leader in long-range, low-power wireless sensor technology that automatically identifies, locates and controls assets, personnel and inventory.

IDENTEC SOLUTIONS' robust active RFID, GPS and wireless sensor technologies and applications are ideally suited for the dynamic, challenging environments associated with ports and container terminal operations.

Today, we have the largest installed base of systems in the marine and intermodal markets, with proven installations in Australasia, Europe, Middle East, North and South America for industry leading clients including APM Terminals, DP World, Grup TCB, Hanjin and ICTSI.

An IDENTEC GROUP company, IDENTEC SOLUTIONS is privately held, with its corporate office located in Lustenau, Austria, and North American headquarters in Dallas, Texas, along with service centers in Norway, Australia and Germany. For more information, please visit www.identecsolutions.com.

CONTACT US

EUROPE
+43 5577 87387-0
sales@identecsolutions.com

NORTH AMERICA
+1 972 535-4144
sales@identecsolutions.com

HEAD OFFICE
IDENTEC SOLUTIONS AG
Millennium Park 2
6890 Lustenau
Austria
Tel. +43 5577 87387 0
Fax +49 5577 87387 15

GERMANY
IDENTEC SOLUTIONS
DEUTSCHLAND GMBH
AURUM 05 / Ost
Goldbeckstraße 5
69493 Hirschberg
Germany
Tel.: +49 (0)6201 9957-0
Fax: +49 (0)6201 9957-99

USA
IDENTEC SOLUTIONS, INC.
Liberty Plaza II, Suite 375
5057 Keller Springs Rd,
Addison, Texas 75001
USA
Tel: (972) 535 4144
Fax: (469) 424-0404

NORWAY
IDENTEC SOLUTIONS AS
Karthelia 3
4626 Kristiansand
Norway
Tel. +47 38 00 35 30
Fax +47 38 00 35 31

AUSTRALIA
IDENTEC SOLUTIONS
AUSTRALIA AND NEW
ZEALAND P/L
Riverview Business Park 72
Maribyrnong St, Footscray,
3011 Australia
Tel. +61 3 9396 8900
Fax +61 3 9689 2493